



JOY ORGANICS

CERTIFICATE OF ANALYSIS

PRODUCT NAME: Joy Organics CBD Softgels with Curcumin
PRODUCT STRENGTH: 25 mg CBD / 10 mg Curcumin
FILL LOT NUMBER: 2010501
BEST BY DATE: 10/14/2021
SOFTGEL LOT NUMBER*: C32519-07

Click on the links to view third-party reports

Physical Attributes

Test	Method	Specification	Results
Color	SOP-100	Bright Red to Pink	PASS
Odor	SOP-100	N/A	PASS
Appearance	SOP-100	Dry, ovoid softgel capsules in container with lid and shrinkband	PASS
Primary Package Eval.	SOP-132	Container clean and free of filth. Container caps tight and shrinkbands intact	PASS
Secondary Package Eval.	SOP-132	Labeling Compliance Checked. Cartons sturdy and clean. Sufficient cushion material exists. Box taped and secure.	PASS

Review of Third-Party Analysis

Panel	Method	Specification	Results*	Pass/Fail
Potency - Total CBD	SOP-111	23.75-31.25 mg CBD LOQ**: 10 PPM† (0.001%)	29.4mg	PASS
Potency - D9-THC	SOP-111	None Detected LOQ: 10 PPM (0.001%)	ND	PASS
Compliant Pesticide Panel	SOP-111	WIP-100008 : Product specification for Tinctures, Oregon Action limits apply	ND	PASS
Microbial - Stec E.Coli	SOP-111	Complies with USP 61/62	>LOD	PASS
Microbial - Salmonella	SOP-111	Complies with USP 61/62	>LOD	PASS
Microbial - Yeast and Mold	SOP-111	Complies with USP 61/62	>LOD	PASS
CA Compliant Heavy Metal Panel	SOP-111	Arsenic (As): ≤1.5 PPM Cadmium (Cd): ≤0.5 PPM Mercury (Hg): ≤1.0 PPM Lead (Pb): ≤0.5 PPM	ND	PASS

* *Level of Quantitation, † Parts Per Million

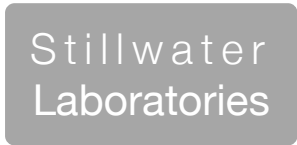
Quality Certified by: Darcie Moran 04/30/2020
 Darcie Moran Date
 Manager of Quality Assurance

Curcumin Softgel C32519-07

Certificate of Analysis



total cannabinoids	Δ^9 -THC	THCa	total THC
29.7 mg	0 mg	0 mg	0 mg
per capsule	CBD	CBDa	total CBD
	29.4 mg	0 mg	29.4 mg



<https://portal.a2la.org/scopepdf/4961-01.pdf>

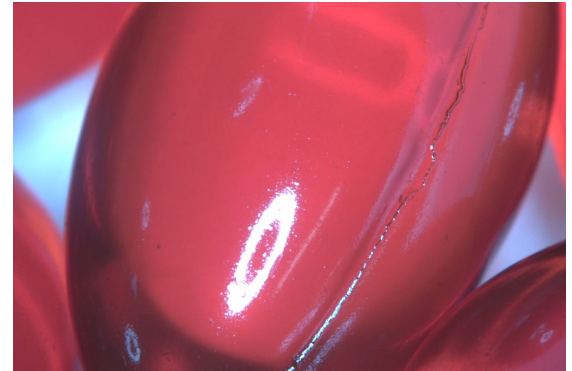
Sample Handling

edible

test ID	sample wt	1.9 g
type	edible	order 6866
lab ID	OCS30	sample date 3/20/2020
unit	capsule	unit weight 0.5 g

Methods

	method	equipment
weights	MSP-7.3.1.3	AUX120.1
potency	MSP-7.5.1.5	LC-2030
terpenes	MSP-7.5.1.7	QP2020/HS20
pesticides	MSP-7.5.1.8	LC-8060
mycotoxins	MSP-7.5.1.8	LC-8060
microbial	MSP-7.5.1.9	Hardy Diag
solvents	MSP-7.5.1.6	QP2020/HS20
metals	MSP-7.5.1.1	ICPMS2030



Potency	per capsule	estimated error	Terpenes	%	estimated error	%	estimated error	%	estimated error
tetrahydrocannabinolic acid (THCa)	0%	0 mg ± 0.01 mg	terpenes not tested / not required						
Δ^9 -tetrahydrocannabinol (Δ^9 THC)	0%	0 mg ± 0.01 mg							
Δ^8 -tetrahydrocannabinol (Δ^8 THC)	0%	0 mg ± 0.01 mg							
tetrahydrocannabivarin (THCv)	0%	0 mg ± 0.01 mg							
cannabidiolic acid (CBDa)	0%	0 mg ± 0.01 mg							
cannabidiol (CBD)	5.88%	29.4 mg ± 0.13 mg							
cannabidivarin (CBDv)	0%	0 mg ± 0.01 mg							
cannabigerolic acid (CBGa)	0%	0 mg ± 0.01 mg							
cannabigerol (CBG)	.06%	.3 mg ± 0.02 mg							
cannabinol (CBN)	0%	0 mg ± 0.01 mg							
cannabichromene (CBC)	0%	0 mg ± 0.01 mg							

Solvents	MT limit	OCS30	LOQ	Pesticides (MT)	MT limit	OCS30	LOQ	Pesticides (other)	OCS30	LOQ
----------	----------	-------	-----	-----------------	----------	-------	-----	--------------------	-------	-----

solvents
not tested / not required

SEE NEXT PAGE

Toxic Metals	MT limit	OCS30	LOQ
arsenic	2 ppm	0.0 ppm	<10ppb
cadmium	4.1 ppm	0.0 ppm	<10ppb
lead	1.2 ppm	0.0 ppm	<10ppb
mercury	0.4 ppm	0.0 ppm	<10ppb

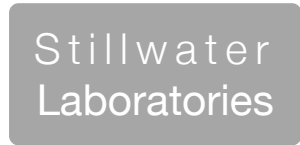
Microbial	MT limit	OCS30	LOQ
<i>E. coli</i>	10 CFU	0 CFU	<10 CFU/g
Salmonella sp.	10 CFU	0 CFU	<10 CFU/g
molds	10000 CFU	0 CFU	<10k CFU/g

Comments

• All testing was completed onsite at 6073 US93N, Olney MT • Potency (cannabinoid concentration) is calculated from the equation: [cannabinoid] = [cannabinoid]_{HPLC} x volume_{dilution}/m_{dry}. Terpene concentration is calculated from the equation: [terpene] = (terpene mass)_{GCMS} / m_{dry}. ••• Decarboxyted cannabinoid concentration is calculated from the equation XXX_{total} = 0.877 x XXX_a + XXX ••• Standards are used to calibrate the resulting data and estimate error using a standard estimate of error method; this is combined with error from weighing and dilution using the propagation of error formula s_g² = Σ(∂f/∂i)²s_i² where i is the contributor to error. The 95% confidence range is calculated from the equation: (concentration) ± t_{CL90} x s_g. Sampling error is not

Certified by:

Justin M Johnston
Deputy Director
6073 US93N, Olney MT 59927
406-881-2019 rdb@stwlabs.com



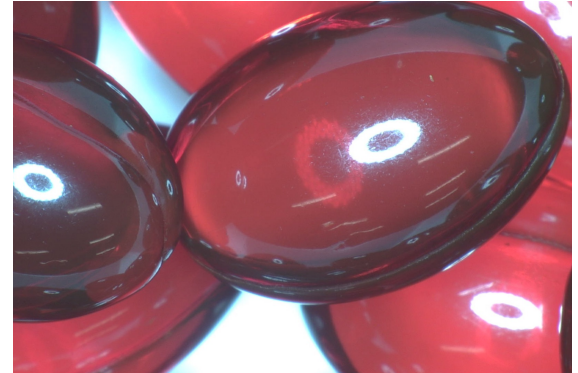
https://portal.a2la.org/scopepdf/4961-01.pdf

Sample Handling

test ID sample date 6/29/20 5:13 PM
 order 7680 labID 0FW42 weight 18.4 g
 source

Methods	method	equipment
weights	MSP-7.3.1.3	AUX120.1
potency	MSP-7.5.1.5	LC-2030
terpenes	MSP-7.5.1.7	QP2020/HS20
pesticides	MSP-7.5.1.8	LC-8060
mycotoxins	MSP-7.5.1.8	LC-8060
microbial	MSP-7.5.1.9	Hardy Diag
solvents	MSP-7.5.1.6	QP2020/HS20
metals	MSP-7.5.1.10	ICPMS2030

capsule



Potency	%	estimated error	Terpenes	%	estimated error	%	estimated error	%	estimated error
---------	---	-----------------	----------	---	-----------------	---	-----------------	---	-----------------

potency
not tested

terpenes
not tested / not required

Solvents	MT limit	0FW42	LOQ	Pesticides (MT)	MT limit	0FW42	LOQ	Pesticides (other)	0FW42	LOQ
----------	----------	-------	-----	-----------------	----------	-------	-----	--------------------	-------	-----

solvents
not tested / not required

pesticides
not tested / not required

not tested /
not required

Toxic Metals	MT limit	0FW42	LOQ
--------------	----------	-------	-----

metals
not tested / not required

Microbial	MT limit	0FW42	LOQ
<i>E. coli</i>	10 CFU	0 CFU	<10 CFU/g
Salmonella sp.	10 CFU	0 CFU	<10 CFU/g
molds	10000 CFU	0 CFU	<10k CFU/g

Comments

Certified by:

Kyle Larson, MSc (Biology)
 Deputy Director
 6073 US93N, Olney MT 59927
 406-881-2019 rdb@stwlabs.com

Printed 7/2/2020 1:16 PM

• All testing was completed onsite at 6073 US93N, Olney MT •• Potency (cannabinoid concentration) is calculated from the equation: [cannabinoid] = [cannabinoid]_{HPLC} x volume_{dilution} / m_{dry}. Terpene concentration is calculated from the equation: [terpene] = (terpene mass)_{GCMS} / m_{dry}. ••• Decarboxyted cannabinoid concentration is calculated from the equation XXX_{total} = 0.877 x XXX_a + XXX •••• Standards are used to calibrate the resulting data and estimate error using a standard estimate of error method; this is combined with error from weighing and dilution using the propagation of error formula S_g² = Σ (∂f/∂i)² s_i² where i is the contributor to error. The 95% confidence range is calculated from the equation: (concentration) ± t_{CL90} x S_g. Sampling error is not